

# GGG Hand Safety – Laceration and Cut Protection

Presented by:  
JASON BRINKLEY ASP, QSSP  
NATIONAL ACCOUNTS MANAGER



# Agenda

---

Who is GGS?

---

Why does "Cut Protection" Matter?

---

How Does it Work: Standards / Testing

---

Innovations in PPE: GGS TECHNOLOGY

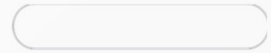
---

Questions and Discussion

---

---

---



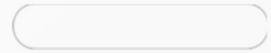
# Who are We?



## About us

Globus Global Safety is a world-leading personal protection solution manufacturer and a provider of innovative protection technology solutions.



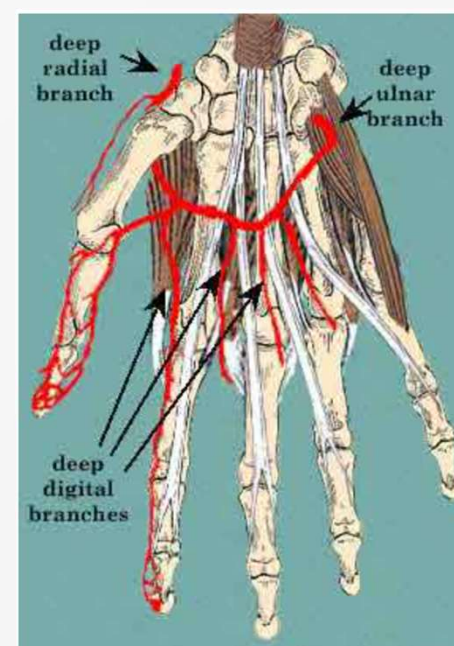
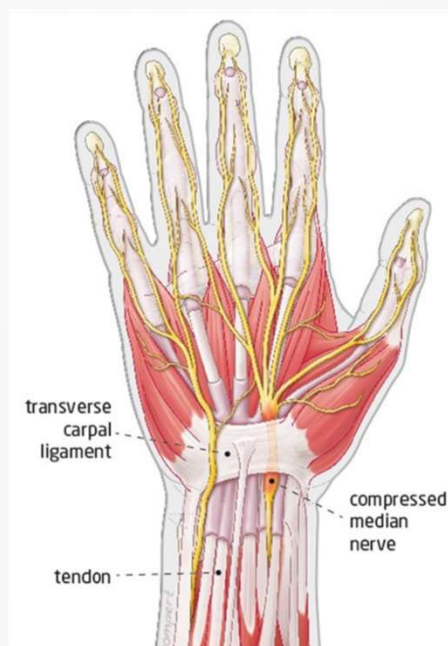
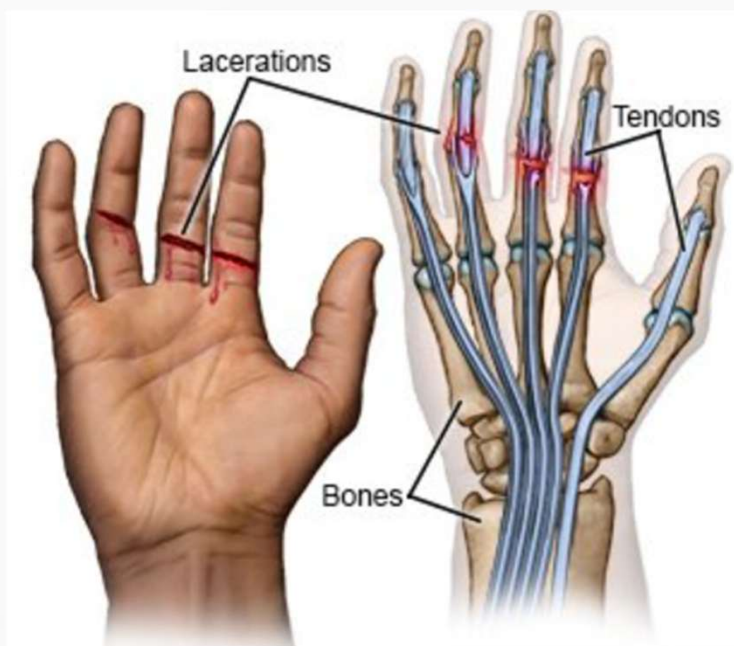


# WHY DOES “Cut Protection” MATTER

## Our People are our Most Important Assets



## Seemingly Superficial but....



Hand Injuries are Life Changing...



**CAUTION**



## Hand Injuries are Life Changing...



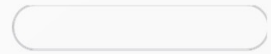
## 70% of Hand Injuries Happen when Gloves Aren't Worn

### What are the most common reasons for that?

- The team member wasn't wearing them to begin with.. (policy / compliance issue, PPE wasn't readily available or easy to access)
- Bravado
- **OR: The Glove was removed to:**
  - Perform a task (Dexterity, tight space, tactile feel)
  - Utilize a touch screen device (send a quick text, I-pad Permitting, Note entry)
  - Increase comfort (too hot, itchy, etc...)
- Lack of Education or Understanding.. "a glove is just a glove"

## And the other 30%...

- Consequently, the other 30% of Hand Injuries Occur when a “A” Glove is worn, but does not offer any or enough protection to mitigate a hazard
- The vast majority of these might have been significantly reduced or even prevented by using the “right” glove ..
- Gloves have become tools and picking the right tool for the can be a risk mitigation technique.



# LACERATION STANDARDS AND TESTING

# ANSI / ISEA 105: 2016 TDM CUT TEST



Material from the product to be tested is fitted to the base of the TDM-100 testing machine (blue in illustration).

A specific weight is applied to the new razor blade, which is lowered to the material. The motor draws the blade with the applied weight across the material until cut through occurs. The number of mm to cut-through is reported for that weight.

The weight loads are repeated five times to provide 15 data-points for cut-through at short, medium, and long blade travel.

A liner regression of all 15 data-points provides the calculated weight in grams where the 20 mm blade travel would occur. Three samples are tested for each material for a total of 45 data-points to determine the weight (grams).

ANSI/ISEA 105-2024 Hand Protection Performance Classification is applied to provide the level based on the gram weight of cut through with 20 mm blade travel.

# 1

**BLADE IS  
LOWERED ONTO  
TEST MATERIAL**

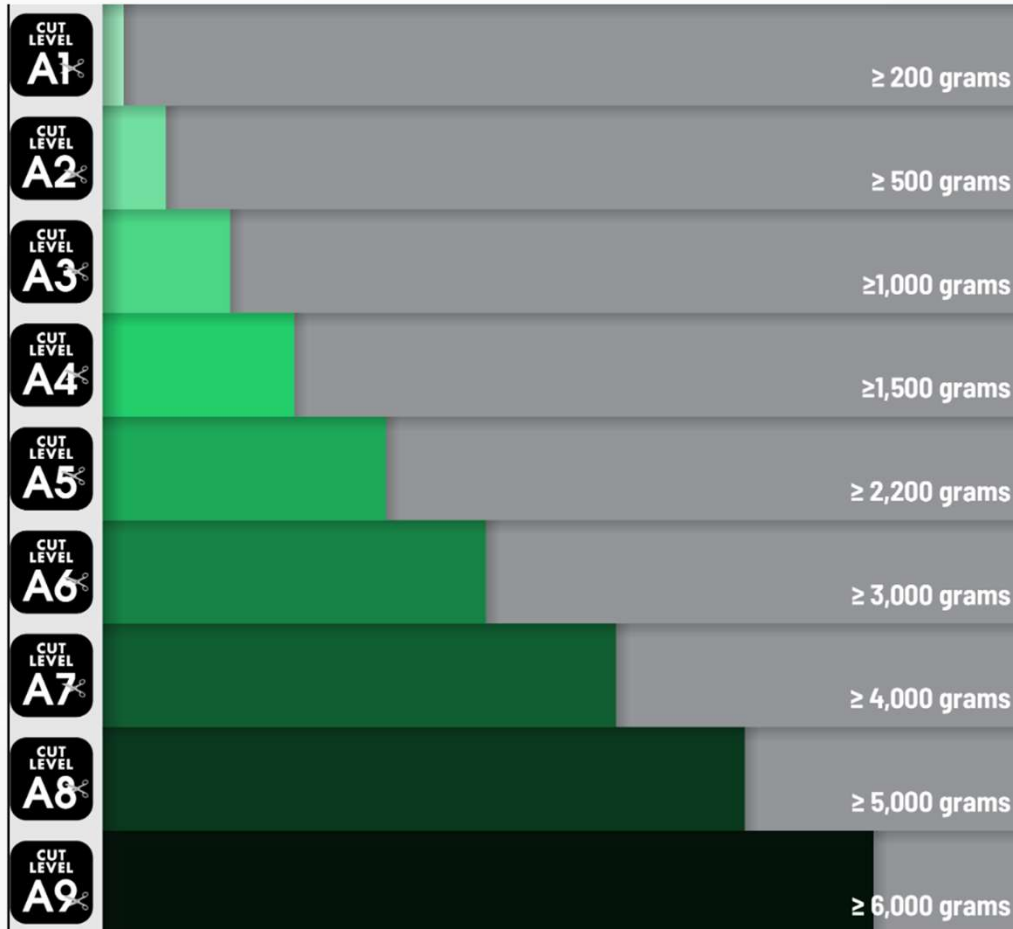


# 2

**BLADE IS MOVED  
20 MM ACROSS  
TEST MATERIAL**



# ANSI/ISEA 105 CUT LEVELS

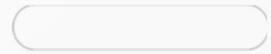


- A1 Gloves provide very minimal laceration protection. Around 7 ounces of force will cut through this glove. Less with a longer cutting stroke. (TDM test is measured at 20 mm)
- An A9 Glove can provide upwards of 11 lbs of resistance against the cut test's razor blade
- Lab Testing and Results are not real life, but they give Safety Managers a metric to use when looking mechanical hazard data and risk.
- This in combination with the hierarchy of controls, can help us get the right product on the right people, at the right time.

## GLOVE INNOVATION FOCUS

- MORE COMFORT
- MORE DEXTERITY
- HIGHER LEVELS OF PROTECTION
- MORE FLEXIBILITY
- FEWER REASONS TO TAKE THE GLOVES OFF
- TOUCHSCREEN
- IMPROVED GRIP TECHNOLOGIES
- DURABILITY
- ECO FRIENDLINESS





# GGG INNOVATIONS



## CR921

**Samurai Glove® Salt-and-Pepper Cut Resistant  
Coated Touch Screen Gloves Made with 21-  
Gauge Tuffalene® Platinum - CR921**

- › These cut-resistant gloves have a 21-gauge salt-and-pepper seamless Tuffalene® Platinum UHMWPE shell. Our innovative Tuffalene® Platinum offers extra comfort, protection, and durability — Free from glass fibers or metal enhancements to achieve this level of cut protection. This uniquely crafted material is cooler and provides a more comfortable user experience while also retaining a puncture resistance comparable to enhanced fibers. Gloves made with Tuffalene® Platinum last longer than enhanced gloves due to the inherent abrasion resistance of the fiber construction. Because Tuffalene® Platinum gloves are constructed without metal or glass fibers, particles of these fibers do not contaminate other materials during handling.



**ANSI/ISEA  
105**



## CR215NFT

**Samurai Glove® Cut Resistant 21-Gauge  
Tuffalene® Platinum Reinforced Gloves with  
Touch Screen Fingers - CR215NFT**

- › These cut-resistant gloves have a 21-gauge blue-and-gray seamless Tuffalene® Platinum UHMWPE shell. Our innovative Tuffalene® Platinum offers extra comfort, protection, and durability — Free from glass fibers or metal enhancements to achieve this level of cut protection. Uniquely crafted cooling material provides a more comfortable user experience while retaining a puncture resistance comparable to enhanced fibers. Gloves made with Tuffalene® Platinum last longer than enhanced gloves due to the inherent abrasion resistance of the fiber construction. Because Tuffalene® Platinum gloves are constructed without metal or glass fibers, particles of these fibers do not contaminate other materials during handling.



**ANSI/ISEA  
105**



## CR3900

Cut and Heat Resistant Grain Goatskin Drivers  
Gloves with Aralene® Liner

- › These standard-grade white grain goatskin leather driver gloves are an outstanding cut-resistant option. This glove has a Gunn cut pattern and features a thin Aralene® (enhanced aramid fiber) sewn-in liner for added durability. The keystone thumb reduces hand fatigue and the open cuff allows for easy donning and removal. Sewn with aramid fiber for added cut and heat protection



**ANSI/ISEA  
105**





# HAND SAFETY QUESTIONS

